

Raymond Rollinat

1915

2500





2502



2504



2513



2514



2515



2516



2520



2525



2526



2531



2532





۲۵۳۳



2584



۲۵۳۵



2536



2537



2598



2539

2540





2542



2543



9544



2545



F.F.P.
375560 P

F.F.P. 3

LANE D'ATTACHE
PERMAN

2546



2547



2548

2549



2550





2551



۱۳۳۴





2559

2554





2555



2556



7 1 2 3 4 5 6 7 8 9 10 11 12 13 14 15 16 17 18 19 20
CHARGE 20'

SURFACE 20^M 13

2557



2558



2559



2560



2562





2563





2564



2565



2566



2567



2568



2569



2570



2571



2572



2579



2574



2575



2576



2572

2578





2579



2580



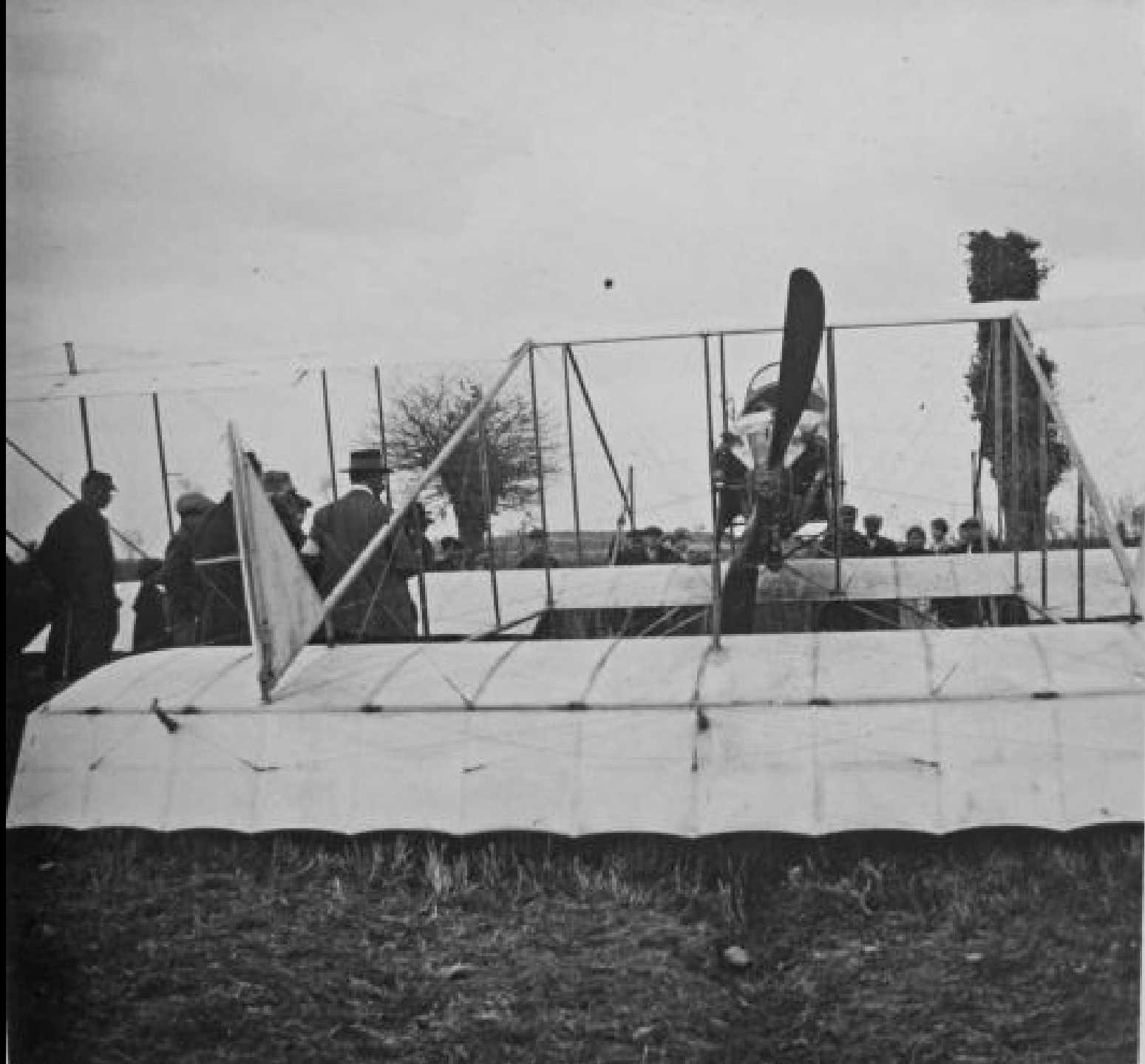
2581



2582



2583



2584



2585



2586



2587

2588

2590



2591

2592



2593







2594

2595



2596



2597



2599



2601



2609



2603



2605



2606



2607



2610





2611



2612





2613





2615

2616



2617





2618



2619





2620





2621





2622



2629





2624



2625





2626





2627



2628



2629

2630





2681



2632

2692





2633



2636



2638



2639





2640



2641



2642



2643





2644



2645



2646



2647



2648

2649





2650



2651





۱۹۱۶





2653



2655





2656



2657



2658



2664



2665



2666



2667



2668



2669



2670



2671



2672



2673



2674



2675



2676



2677



8778



2679



2680



2681



2682



2683



2684



2685



2686



2687



2688



2689



2690



2691

2691



2699





2692



2693



2694



7

2695

2695



269





2696



2697



2698



2699



2700



2701



2702



2703



2704



2705



2706



2707

7072



2707





2708



2709



2710



2711

2712





2719

9714

2714



2715



2716



27 17



2718



2719



2720



2721



2722



2729



100 1114 18

2724



2725



2726



2727



2728



2729



2731



2732



2734



2735



2786



2737



2738



2741



2742



2743



2744



2745



2746



2747



2748



2749



2750



2751





27529



9753





2754



2755



2756



2757

2757





2758

2758







2759





2760



2761



2763



2763



2764



2765





2766



2767



2768



2769

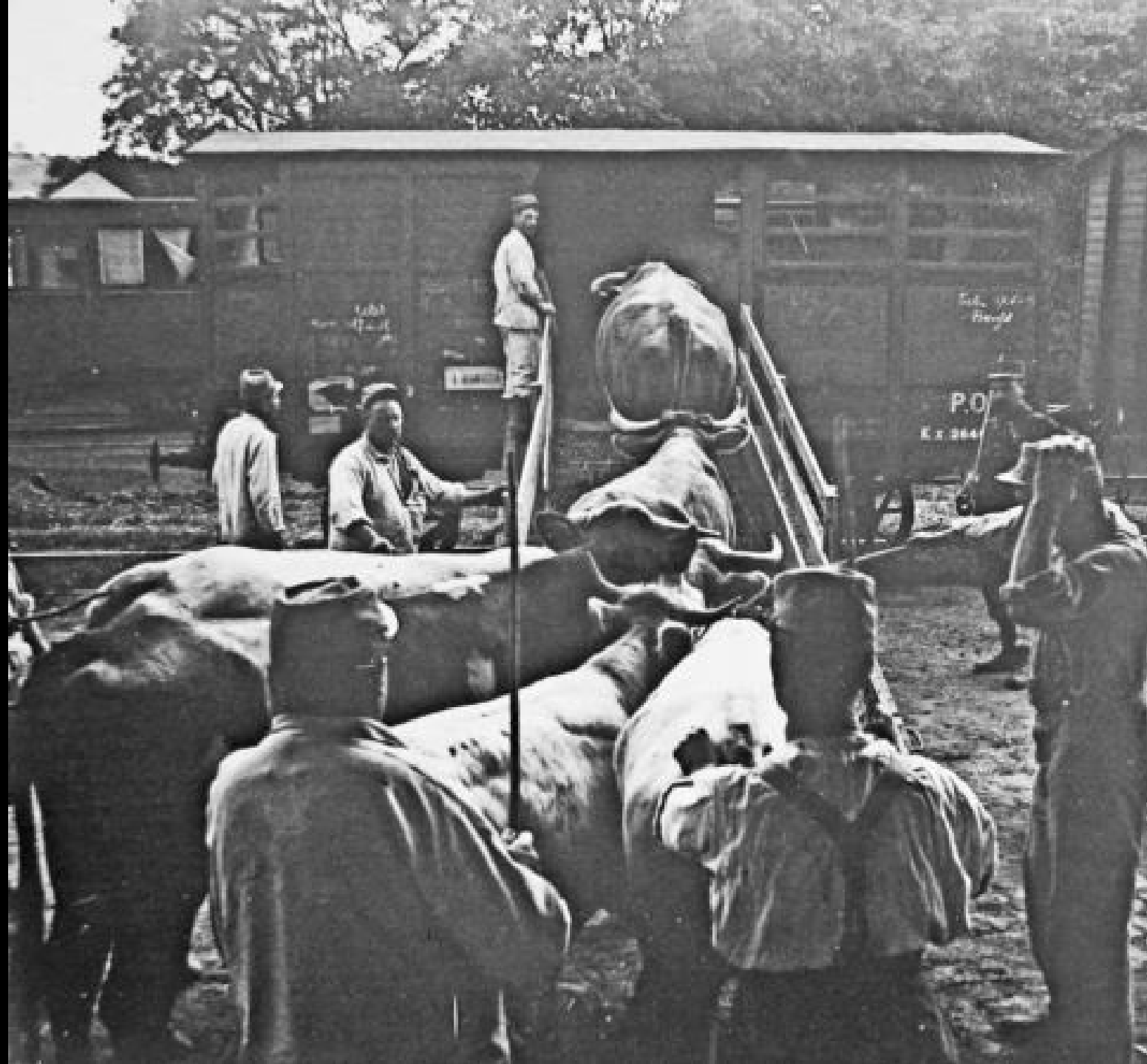


2770





2771





2772



2783

2774





2725



2776



2777



2778





2779



2780



2780



2781



2782



2789



2784



27 85



2786



2787



2789



2790



2791



2792



2793



2794



۲۷۹۵

2796



2797





2798



2799



2800



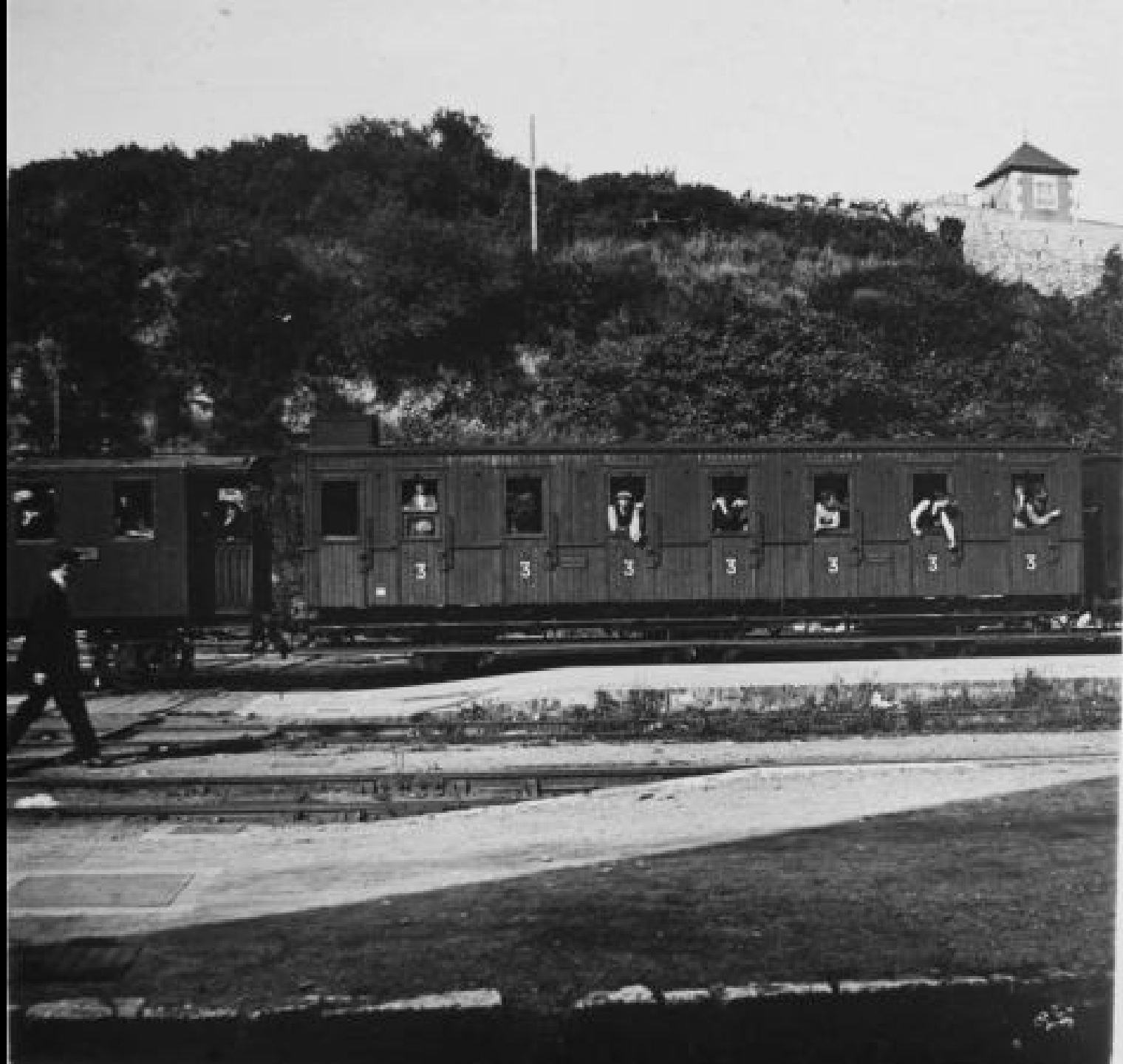
2801



2802



2803



2804



2805



2806



2807



2811



2813

2813





2814



2875





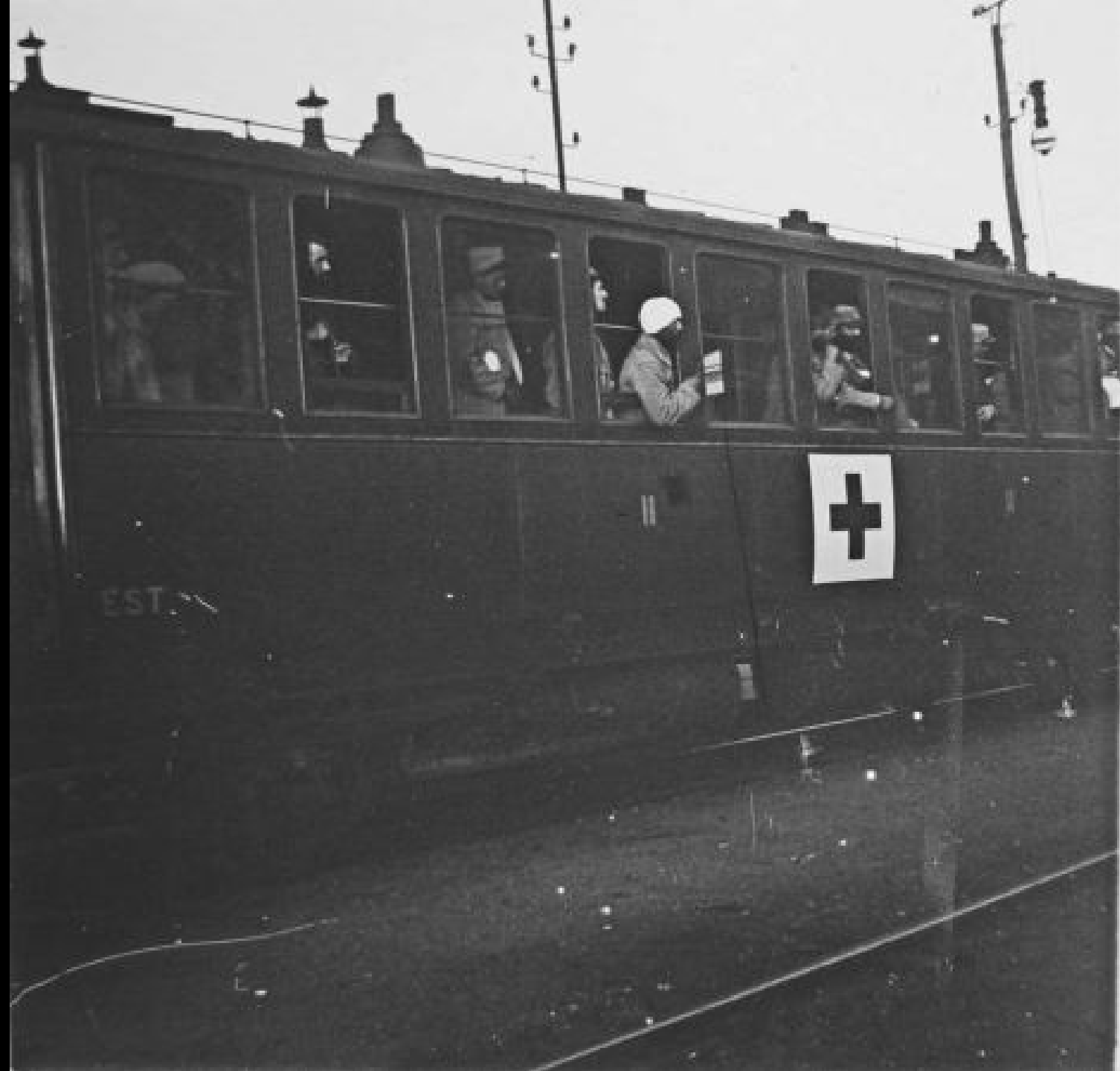


2820





2821



2822



۱۸۸۲





2826





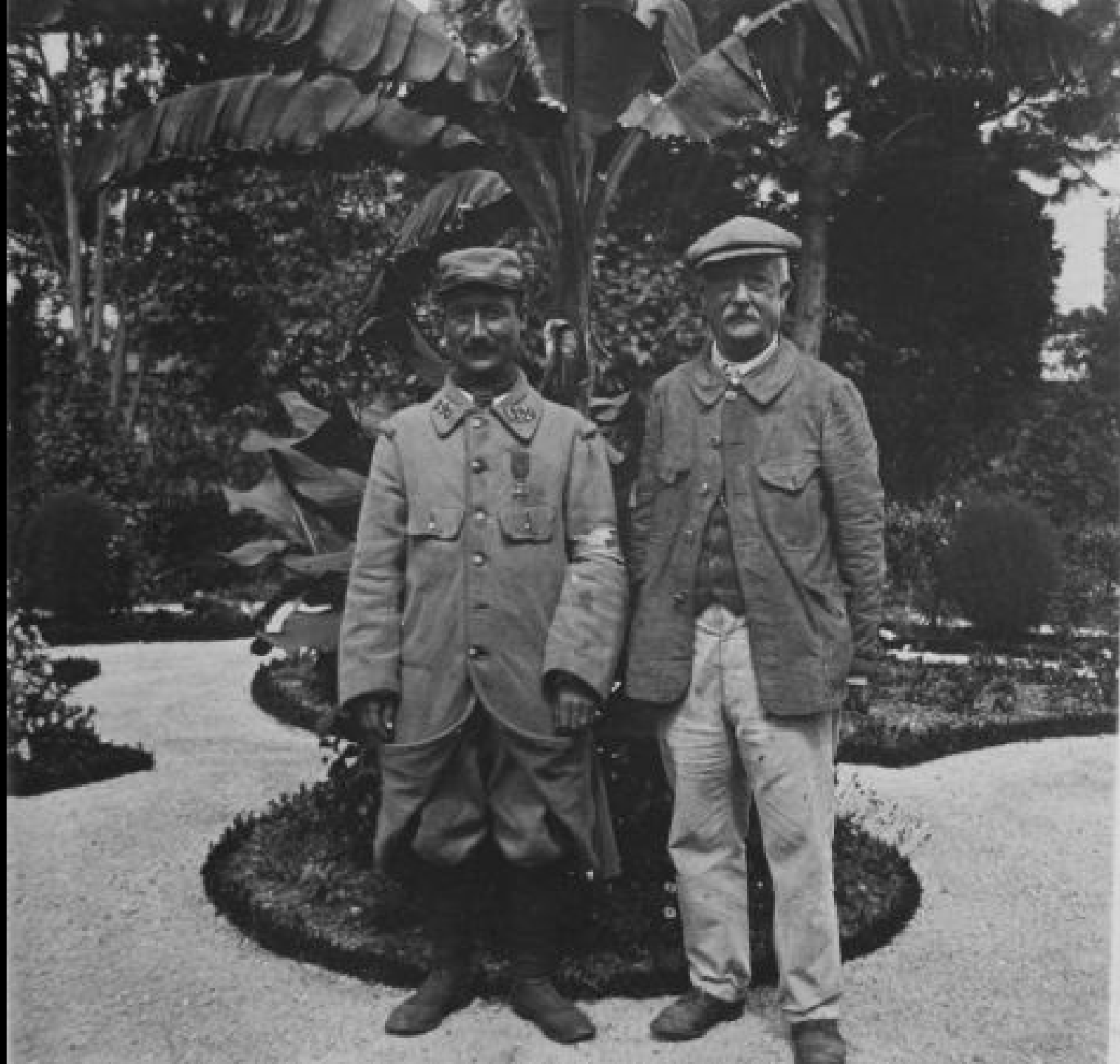
2832



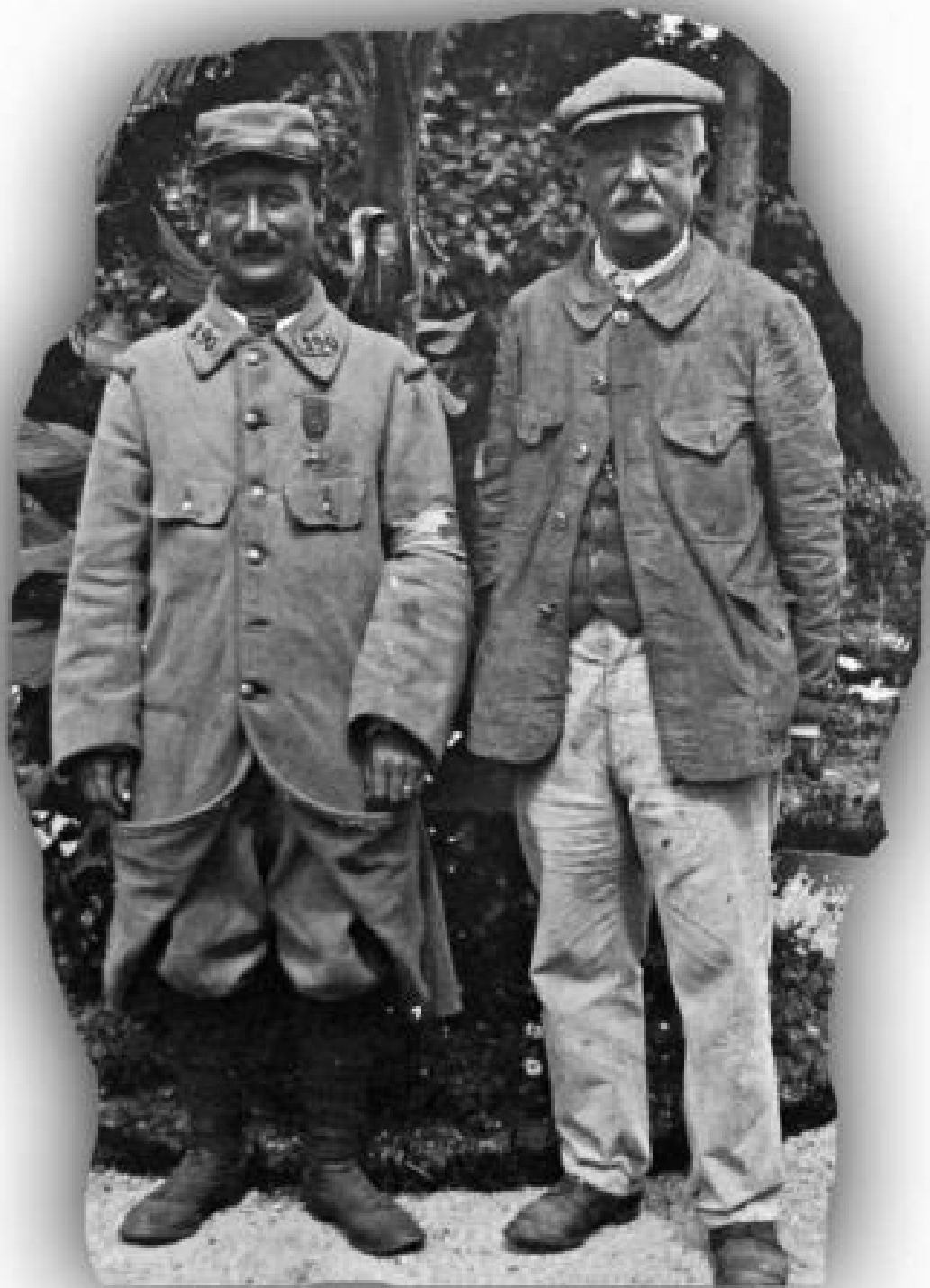


2834



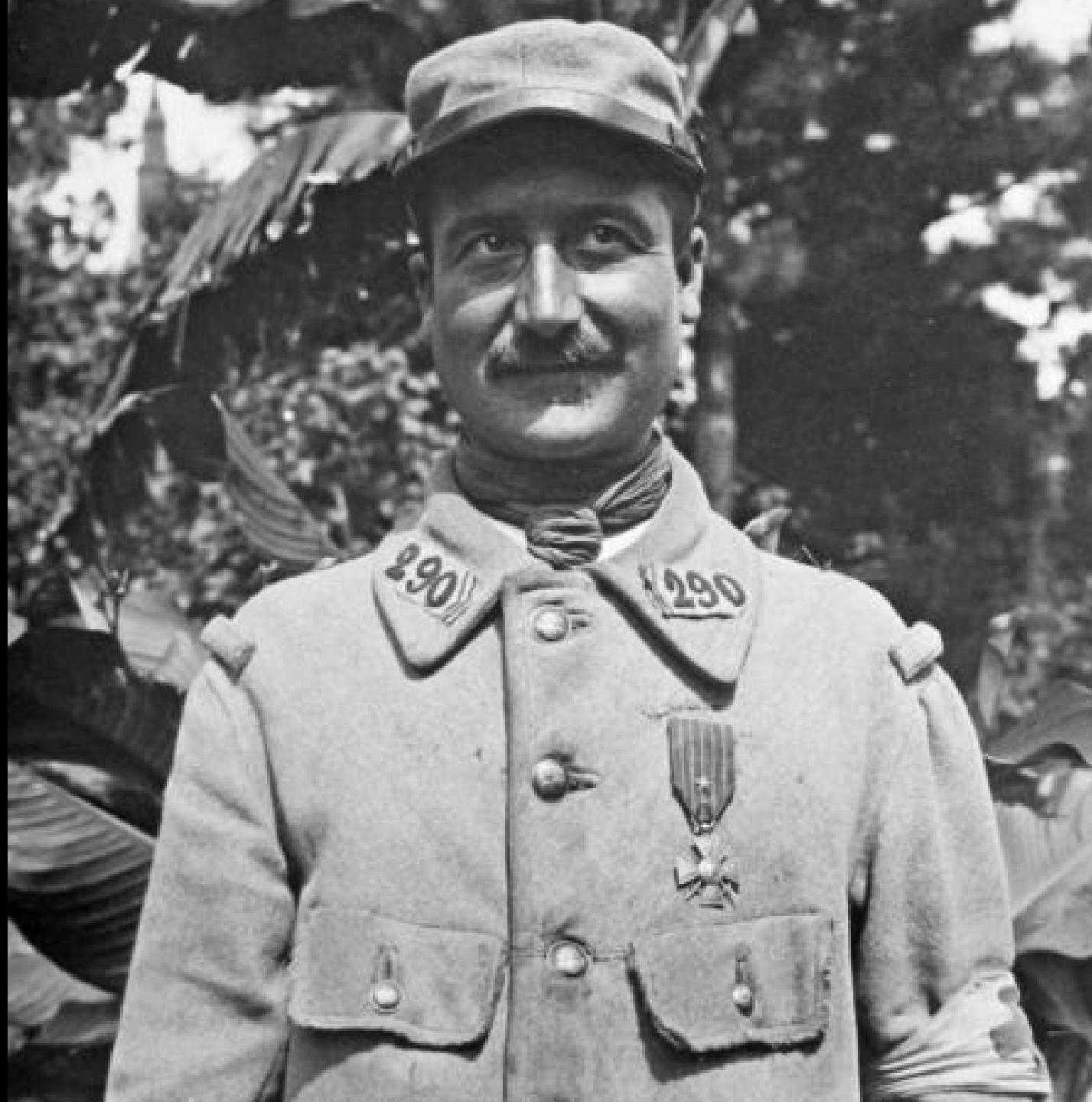


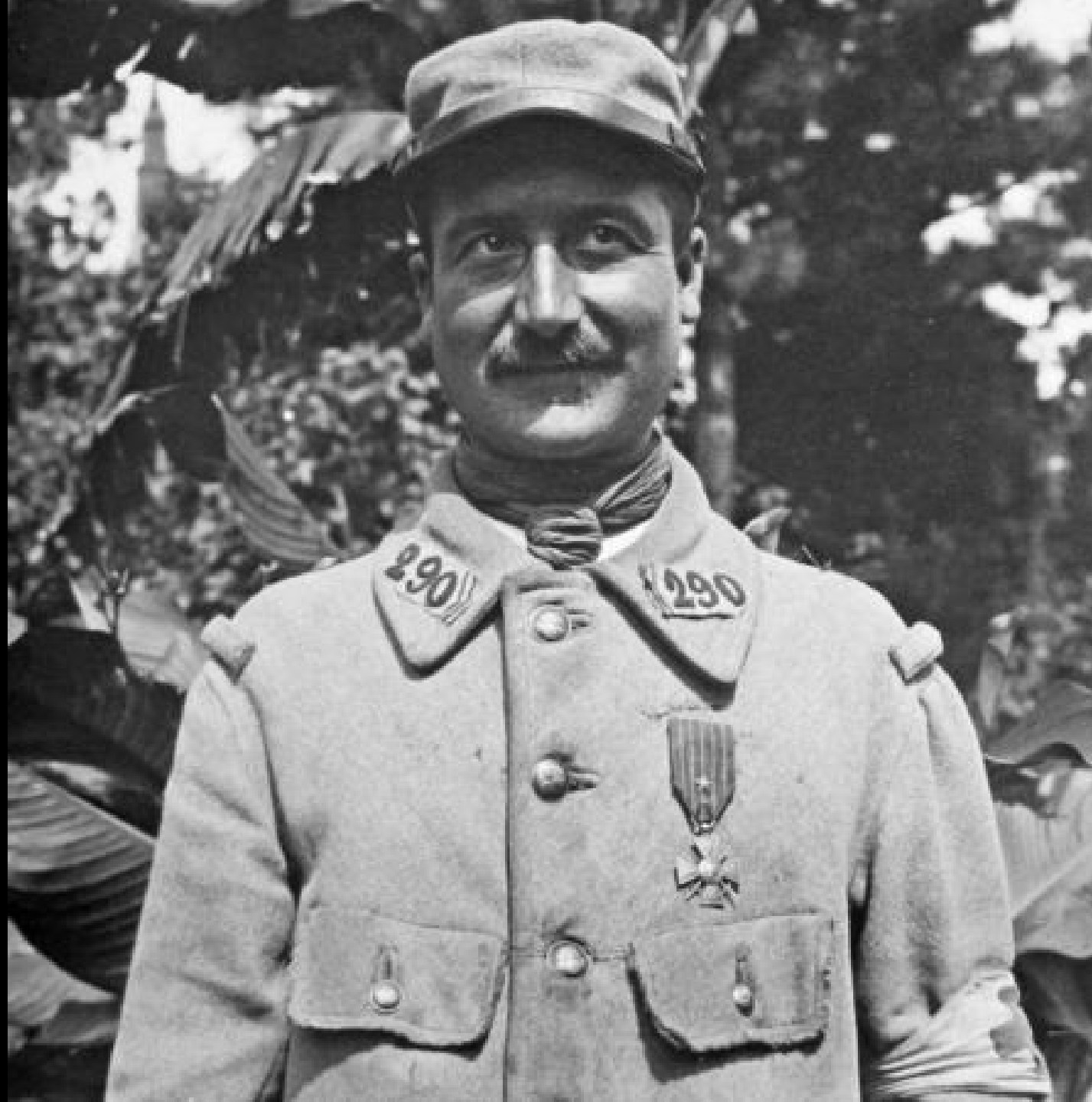
2857





2838







2839



2841

2842





2843



8844



2845



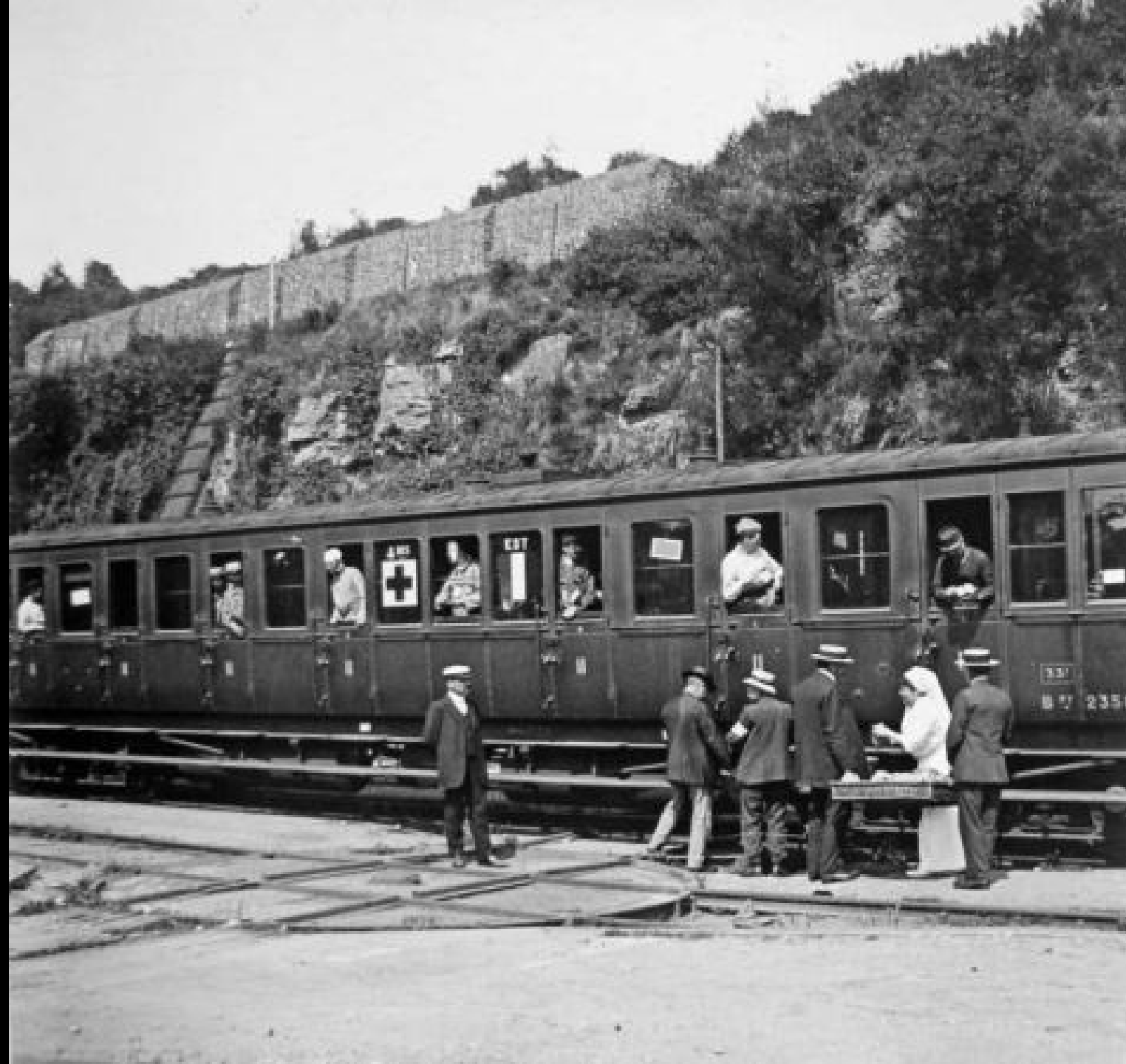
2846



2848



2854





2857



2858

2858



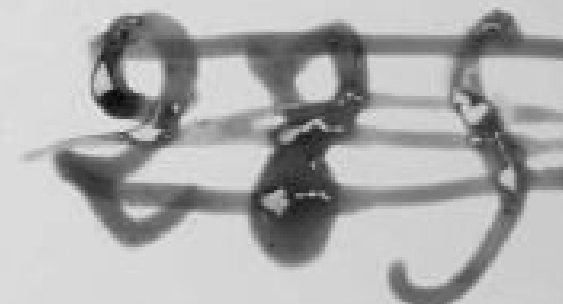
2859



2861



2862





2863



2864





9.865



2866





2867



2869

1282

2782



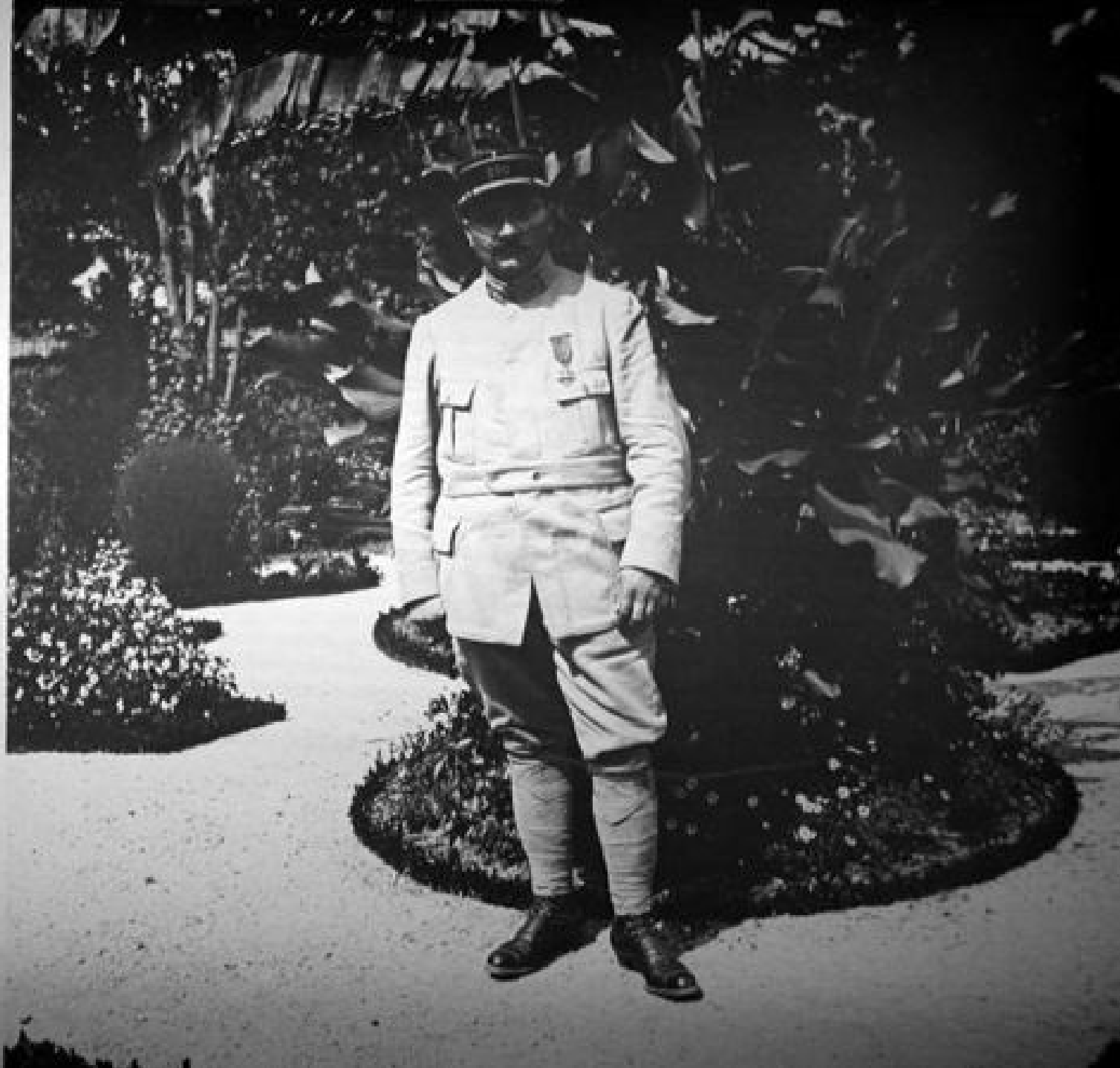
2873

2874



2875

2878







2880



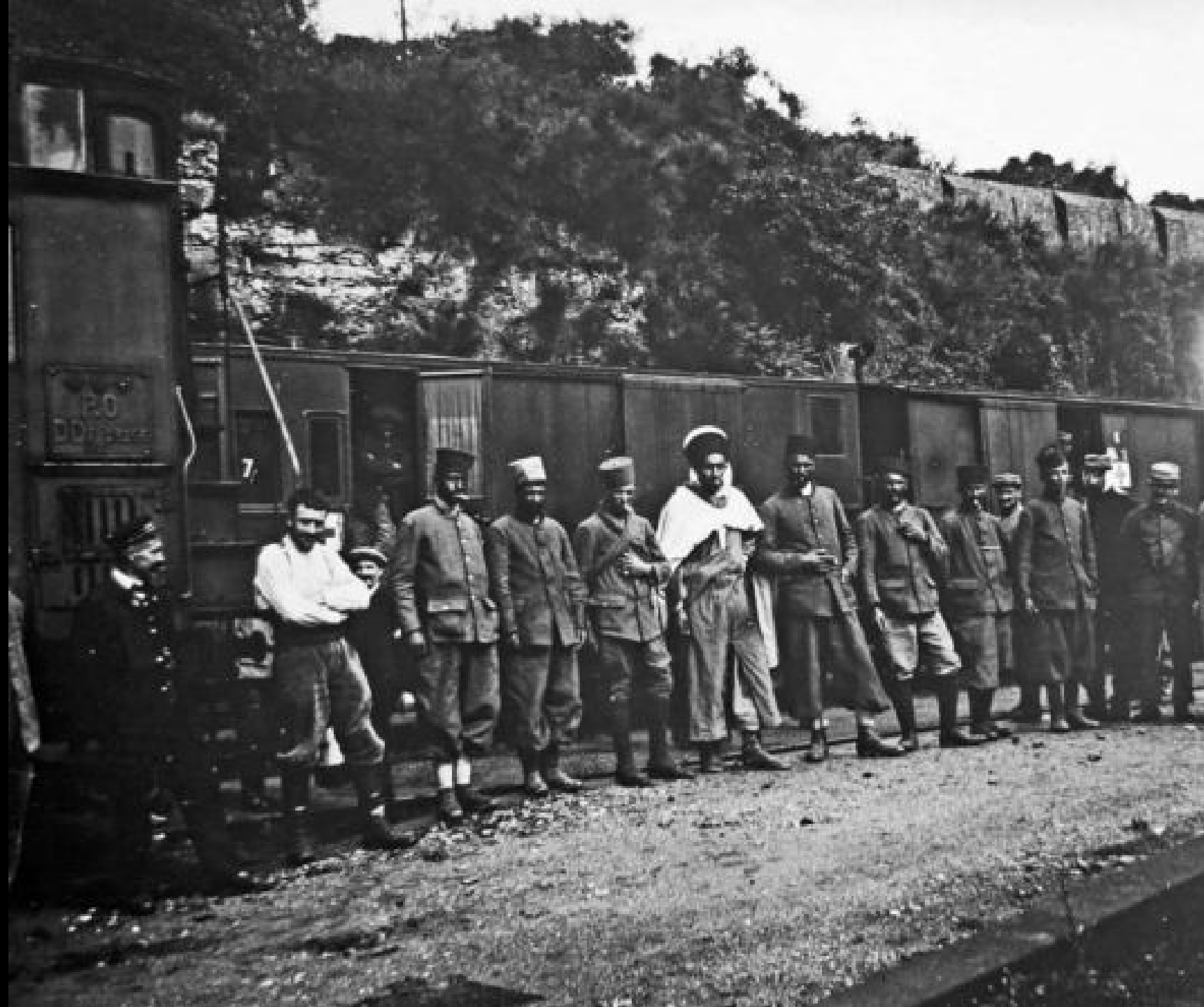
2881



2882



2883





2824



2888



2894





۲۸۹۵



2900





2904



٤٩٥٥



2906



2912

VIDE

66 5 septembre 1915 - Capitaine Alexandre Arrièreau,
aviateur.

5 septembre - Eclussions de Cézards verts.

6 septembre - L'empennement du 6 juin. Vues du
nive répare (on voit encore les rayures), vues des
aiguilles.

6 septembre - Sortie de terre des pinces tortues.

6 septembre - Eclussions de Cézards verts.

~~XXXXXXXXXX~~

2912 a' ~~XXXXXX~~



2913



2916





2917



9918



2919



میر و سع



2953



2954



2968



2971



2972



2978



2974



2975



2981





2982





Nº 1

EXPRESS

2983



2984



2985



2986



2987



2990



2991



NITAIRE

1^{HE} 4 (MIDI)

2992



2993



2994



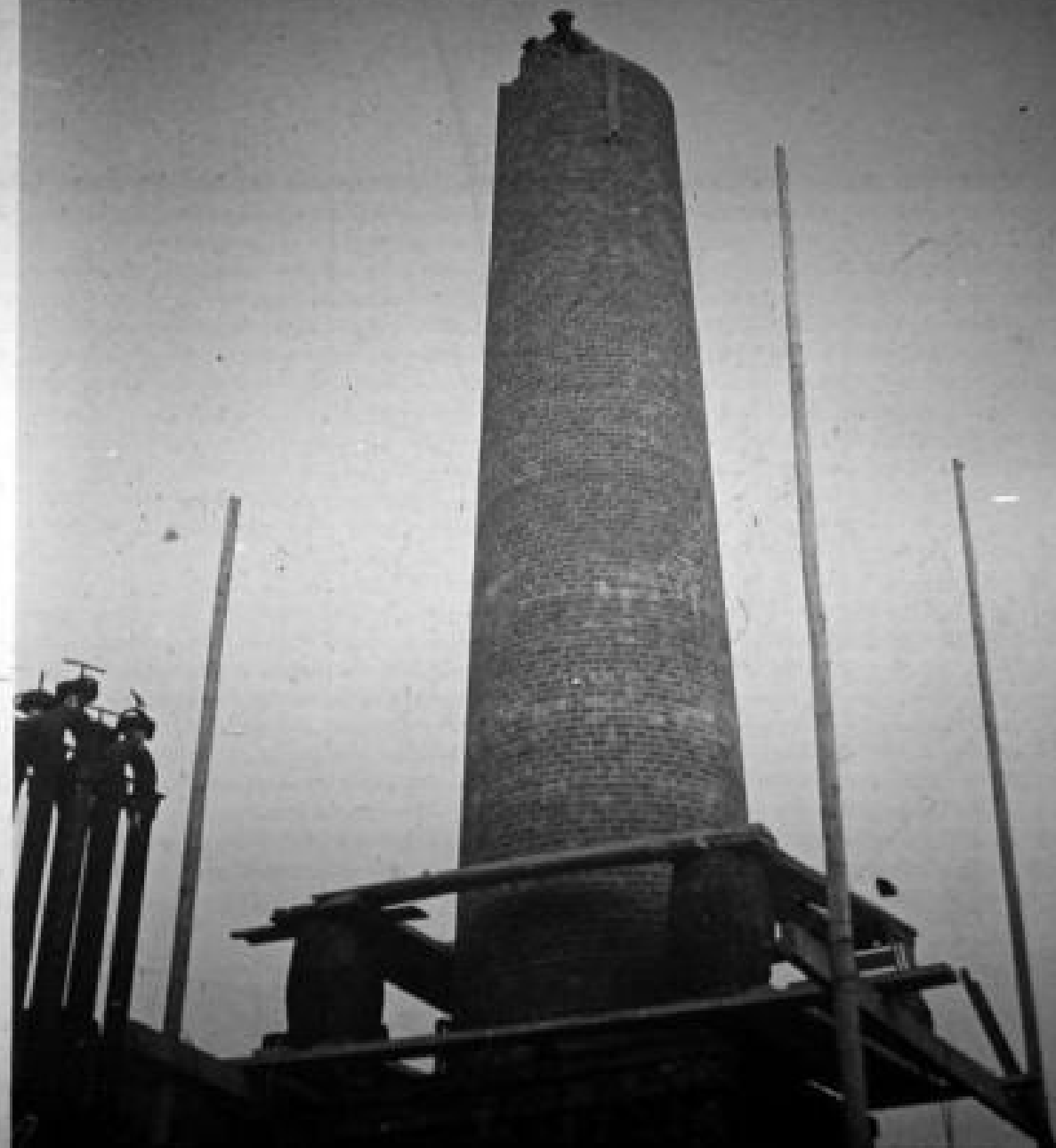


2995



3005

3006





8007



3008



3009



3010



8011

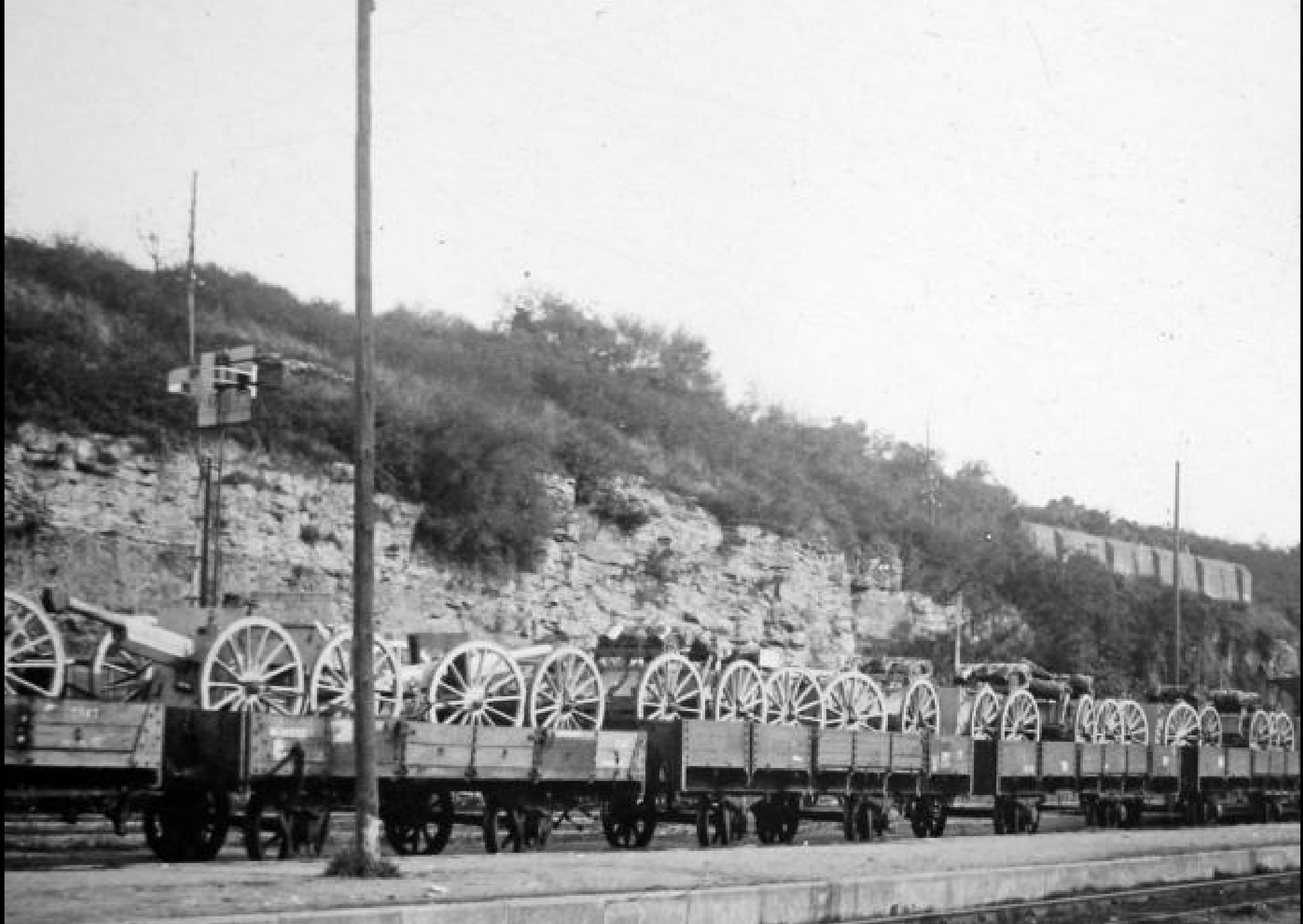




3012



3013





8014



3015



3016





3017





30 18

3021





30 22



3023



3024



3025



3026



3028





3029



30 30







8033





3034



035







30 36





3037



3038



3039



3040



3041



3042



3043



3044



3045





3046





30A7



3048



3049

3050





3051





3054